



Dr. phil. Sabine Rauchmann, M.Sc.

A business librarian's perspective on immersing into the field of SLR in business research: a bumpy road or a smooth ride?

Agenda

1. Adopting SLR in business studies: Immersing into the field
2. Adopting SLR in business studies: Practice at Universität Hamburg
3. Differences between medicine and business studies
4. Preparing and educating ourselves: Dimensions
5. Preparing and educating ourselves: Your skill development plan
6. Conclusion & Discussion

1 Adopting SLR in business studies: Immersing into the field

1.1 Waking up

August 2021

Liebes Schulungsteam,

ich möchte gern für meine selbstorganisierte Studiengruppe den folgenden Termin buchen:

Standort: Fachbibliothek Wirtschaftswissenschaften

Seminar: Ich organisieren dieses Seminar für meine Kolleginnen und Kollegen (Promovierende, Postdocs und Profs.) und mich (Promovierende am Lehrstuhl für Organisation und Unternehmensführung), mit denen ich in einem Projekt arbeite. Das Projekt ist von der DFG gefördert und untersucht den „multiplen Wettbewerb im Hochschulsystem“. Insgesamt werden 8 Teilprojekte durchgeführt, in denen unterschiedliche Aspekte des multiplen Wettbewerbs im Hochschulsystem erforscht werden. In „meinem“ Teilprojekt untersuche ich beispielsweise anhand eine qualitativen Metaanalyse, die „wettbewerbliche Steuerung und Konfiguration der Hochschulgovernance“. Unter diesem [Link \(Projekte \(uni-kassel.de\)\)](#) finden Sie weitere Informationen zum DFG-Projekt.

Anzahl Teilnehmer: Aktuell möchten Frau Prof. Frost und ich an Ihrem Seminar teilnehmen und haben die zweite Augusthälfte als Zeitraum anvisiert. Sobald ich mit Ihnen einen Termin abgesprochen habe, werde ich diesen den anderen DFG-Projektteilnehmenden mitteilen und das Seminar bewerben, damit wir mindestens 5 Teilnehmende werden.

Terminwunsch: ein Termin in der 2.ten Augusthäfte wäre optimal, z.B. am Montag, den 16.08.21 um 10 Uhr

1.2 Asking around

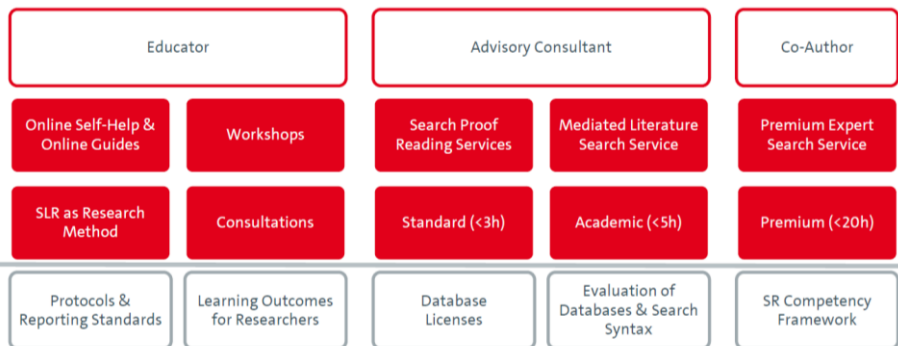
- ÄZB (Central Medical Library)
 - PRESS, Yale MeSH Analyzer, Cochrane Library
 - Working in a team of librarians to facilitate exchange and updates
- Fachreferententagung Wirtschaftswissenschaften (Bremen)
Lightening Talk: SLR in business studies – best practices?
 - Standards for SLR in Business Studies and Economics?
 - Jointly develop a corpus of knowledge
 - Cooperation with medical libraries
 - Linking to other areas, i.e. research data

1.3 Collecting

May 2022 INCONECSS

Support Services for Systematic Literature Reviews in Economic and Business Studies: How Can Business Librarians Cooperate

SLR Service Model Framework



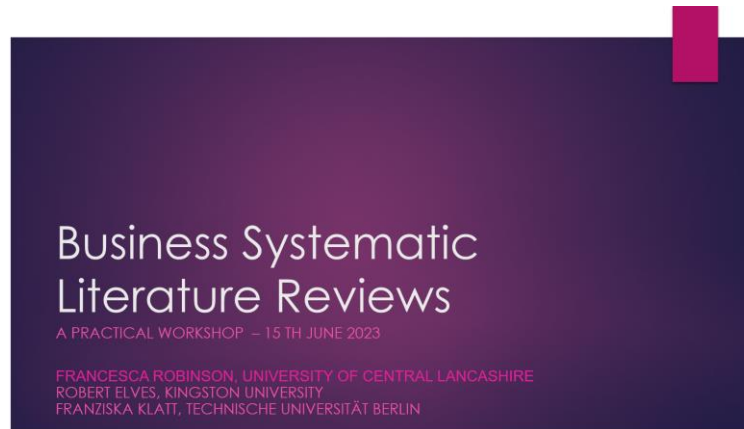
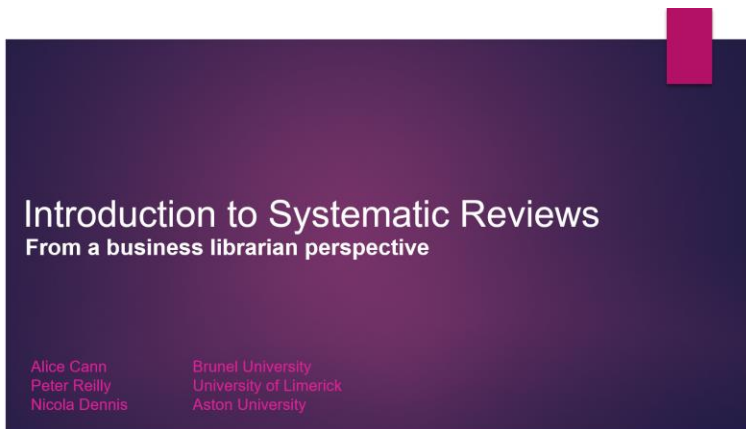
Framework for Collaboration



1.4 Getting lucky

May/June 2023

Workshop > BLA BSLR Working Group



1.5 Catching up

- Consulting
 - 1 to 3 requests for support for SLRs per year
 - Request for SLR > traditional literature review done in a systematic way?
 - Feedback: helped to
 - create the search string in a systematic way
 - determine which resources to use (databases, repositories)
- Organizing: high level of competence needed for SLR vs. day-to-day work

→ Status quo of SLR at Universität Hamburg (WISO, BWL)?

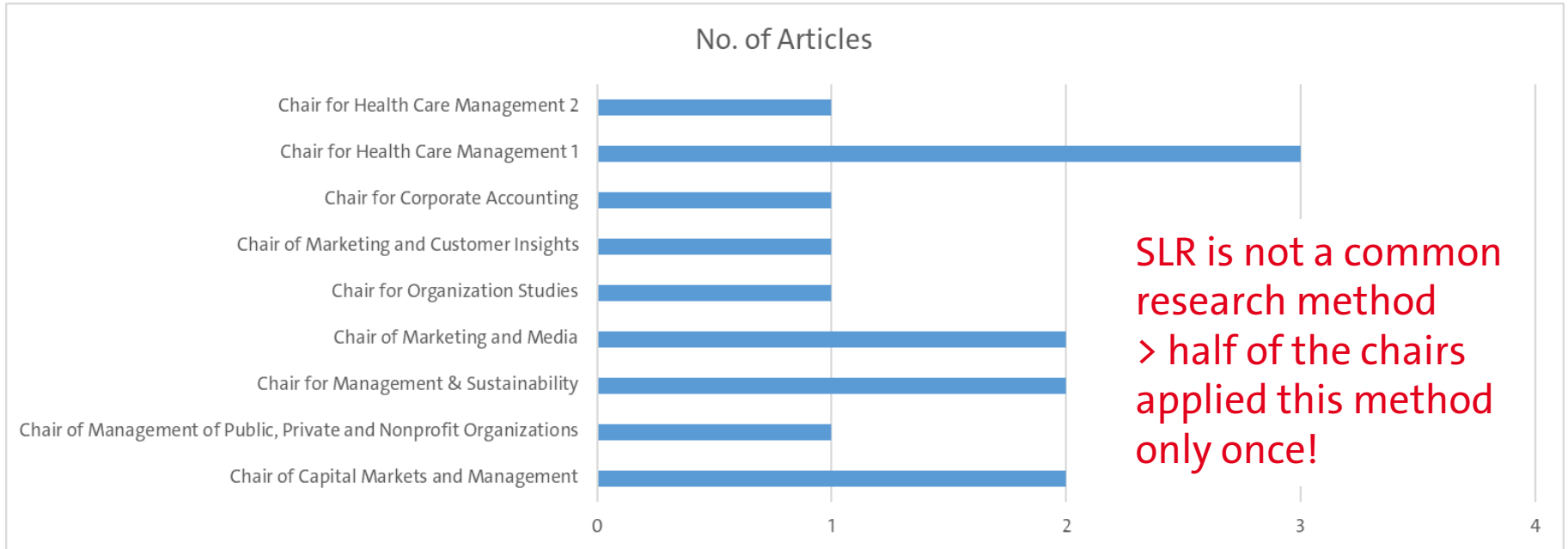
→ Best resources for preparing and educating ourselves?

2 Adopting SLR in business studies: Practice at Universität Hamburg

2.1 Search in SSCI

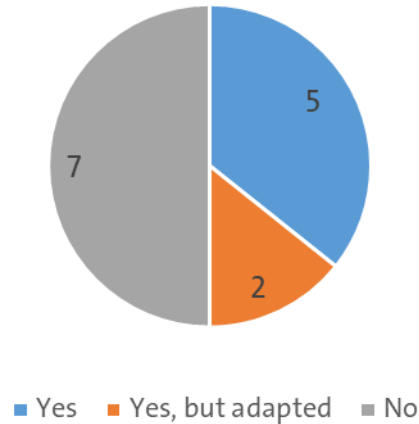
- Search in Web of Science = 43 Articles
 - University of Hamburg (Affiliation) + "systematic review*" OR "meta-analysis*" OR "SLR" OR "systematic literature review*" (All Fields) + 3: WC=("Business" OR "Business Finance" OR "Economics" OR "Management" OR "Operations Research Management Science")
- 27 articles can be linked to the Faculties BWL and WISO
 - 4 articles are meta-analysis of data-sets
 - 1x narrative review,
 - 2x SLR is used in a different meaning, 2x looks more like a scoping review
 - 4x meta-analysis does not describe how they get to the articles
- 14 articles

2.2 Distribution / Chair



2.3 PRISMA

Use of PRISMA



PRISMA is not predominant in business and economic studies.

2.4 PRISMA and Journal Title

| SLR + PRISMA | SLR + no PRISMA |
|--|---|
| Applied Health Economics and Health Policy (1) Entrepreneurship Theory and Practice (1) Journal of Philanthropy and Marketing (1) PharmacoEconomics (3) Public Management Review (1) | Corporate Social Responsibility and Environmental Management (1) International Journal of Research in Marketing (1) Journal of Marketing Research (1) Journal of Retailing and Consumer Services (1) Organization & Environment (1) Sustainability Accounting, Management and Policy Journal (2) |

Reviews are published in a variety of journals.

2.5 Databases used

Wide ranges of databases, no pattern recognizable

| Business |
|--|
| Database |
| ABI/Inform |
| BSC |
| Grey Literature |
| Econis / Econbiz |
| MSI Working Papers / Marketing Science Institute |
| Publisher |
| Academy of Management journals |
| Emerald |
| Economics |
| Database |
| EconLit |
| Grey Literature |
| NBER |
| RePEc |

| General |
|----------------------------|
| Database |
| Scopus |
| WoS |
| Grey Literature |
| UMI Dissertation Abstracts |
| Internet |
| GoogleScholar |
| ResearchGate |
| Publisher |
| JSTOR |
| Oxford Journals |
| Sage |
| ScienceDirect |
| SpringerLink |
| Wiley |

| Medicine |
|--|
| Database |
| Cochrane Library |
| Database of Abstracts of Reviews of Effects (DARE) |
| Embase |
| Health Technology Assessment (HTA) |
| Medline / PubMed |
| National Health Service Economic Evaluation Database (NHS EED) |
| University of York Centre for Reviews and Dissemination Database |
| Psychology |
| Database |
| PsycInfo |
| Social Sciences |
| Grey Literature |
| SSRN |

2.5 Search strings

- Search terms, but search string or search history is frequently missing
- Medline
((((chronic AND (lymphocytic OR lymphoblastic OR lymphoid) AND (leukemia OR leukaemia) OR CLL) AND (econom* OR burden OR cost OR "cost of illness" OR COI OR "burden of disease" OR "non monetary" OR "patient utility" OR "patient benefit" OR QALY OR DALY OR "quality of life" OR QoL))) AND (english[Language] OR german[Language])))

Quite comprehensive search strings for complex research questions.

3 Differences between medicine and business studies

3.1 Different: Research approach (1)

Table 1. Differences between medical research and management research

| | Medicine | Management |
|---------------------------------|--|---|
| <i>Nature of the discipline</i> | Convergent | Divergent. |
| Research culture | Subjected to rigorous scientific evaluation. | Split between positivist and phenomenological perspectives. |
| Research questions | High consensus over research questions. | Low consensus over research questions. |
| Interventions | Can be measured through experiments. | Experimentation may or may not be feasible. |
| Research designs | Based upon a hierarchy of evidence. | Triangulation is recommended. |
| Theory | Concerned with what works—did the intervention offer overall benefits. | Concerned with why something works or does not work and the context in which this occurs. |
| Aims of policy | Generally reducing illness and death, and improving health. | Multiple and competing and the balance between them may change over time. |
| Weight of inputs into policy | Scientific evidence. | Many extraneous factors. |
| Methods | Predominantly quantitative. | Quantitative and qualitative. |
| <i>Literature reviews</i> | Systematic review and meta-analysis. | Largely narrative reviews. |
| The need for a review | Reviews of effectiveness are used by clinical practitioners. | To develop a research question and inform empirical research practice. |

Tranfield, D. et al. (2003). Towards a methodology for developing evidence-informed management knowledge by means of systematic review. *British Journal of Management*, 14, 207–222. <https://doi.org/10.1111/1467-8551.00375>

3.1 Different: Research Approach (2)

| | subject area. | |
|----------------------|---|---|
| Review protocol | <p>A plan prior to the review states the criterion for including and excluding studies, the search strategy, description of the methods to be used, coding strategies and the statistical procedures to be employed.</p> <p>Protocols are made available by international bodies to enhance networking the exchange of knowledge.</p> | <p>Level of formality and standardisation in designing/adopting protocols is usually low. Unacceptable to 'tightly' plan literature review, as this may inhibit the researchers capacity to explore, discover and develop ideas.</p> |
| Identifying research | <p>A comprehensive, structured search is conducted using predetermined keywords and search strings.</p> | <p>Identifying a field/sub- fields of study generally occurs through informal consultation. Implicit idiosyncratic methods of data collection are used. Based on studies that appear relevant or interesting. Researchers bias disables critical appraisal. Decisions regarding choice are not recorded precluding any audit trails 'Raw data' is often not available in academic articles, which usually represent 'partial studies'. Precise inclusion/exclusion criteria are often not formally agreed, applied recorded or monitored.</p> |
| Selection of studies | <p>Inclusion and exclusion criteria are expressed in the protocol to ensure a review of the best available evidence.</p> <p>Draw upon 'raw data' from 'whole studies' for analysis to create a study in its own right.</p> | |

Tranfield, D. et al. (2003). Towards a methodology for developing evidence-informed management knowledge by means of systematic review. *British Journal of Management*, 14, 207–222. <https://doi.org/10.1111/1467-8551.00375>

3.2 Different: Studies

- “Management research is a relatively young field, far less well developed in terms of agenda and question formulation than much of medical science.” (Tranfield et al., 2003, 212)
 - Studies in the field rarely address identical problems, share a research agenda or ask the same questions
- Studies are often
 - narrative and qualitative, higher level of subjectivity associated with the synthesis process
 - multidisciplinary with many intersections with economics, psychology, sociology, education, public administration etc. (Liu, 2021)

3.3 Different: Databases

- Search strategies are more challenging because
 - Broad, unstructured topics with 2+ foci
 - controlled vocabularies are much less controlled
 - content in business databases is changing
 - databases mostly require a license

Liu, G. (2021). Systematic reviews in business and management: are business librarians ready? *Academic BRASS*, 16(1), 1-8.
https://digitalcommons.wcupa.edu/lib_facpub/23

3.4 Different: Guides by researchers vs. PRISMA

| Article | Subject Area | Notes |
|----------------------------|---------------------------------------|---|
| Adams, Smart, & Huff, 2017 | Management and organizational studies | International Journal of Management Reviews <ul style="list-style-type: none"> • Grey Literature |
| Clark et al., 2021 | Management and business | Management Review Quarterly |
| Fisch & Block, 2018 | Management and business | Management Review Quarterly |
| Palmatier et al., 2018 | Marketing | Journal of the Academy of Marketing Science |
| Torraco, 2005 | Human resources | Human Resource Development Review <ul style="list-style-type: none"> • Defines the integrative literature review • Provides guidelines and examples for integrative literature reviews • Discusses contributions of a integrative literature review |
| Tranfield et al., 2003 | Management | British Journal of Management <ul style="list-style-type: none"> • Compares management and healthcare research • Highlights the challenges of conducting a SR in management research • Provides guidelines for conducting a SR in management Research |

(Snyder, 2019)

3.5 Same: Errors in SLR

- Protocols and standards
- Databases vs. publishers
- Search strings / search history
- Replicable / reproducible?

Briscoe, S. (2023). Errors to avoid when searching for studies for systematic reviews: A guide for nurse researchers. *International Journal of Older People Nursing*, 18, e12533. <https://doi.org/10.1111/opn.12533>

Errors when using bibliographic databases

Database selection

Error #1: Only searching one bibliographic database

Error #2: Not searching appropriate bibliographic databases

Free-text terms

Error #3: Search terms do not map onto the research question

Error #4: Missing synonyms

Error #5: Lack of spelling variation

Error #6: Spelling errors

Controlled vocabulary

Error #7: Not using controlled vocabulary

Error #8: Not using the explode function

Error #9: Not translating controlled vocabulary

Error #10: Free-text and controlled vocabulary in same line

Structural issues

Error #11: Incorrect use of Boolean operators

Error #12: Incorrect line combinations

Error #13: Syntax errors

Errors when using supplementary search methods

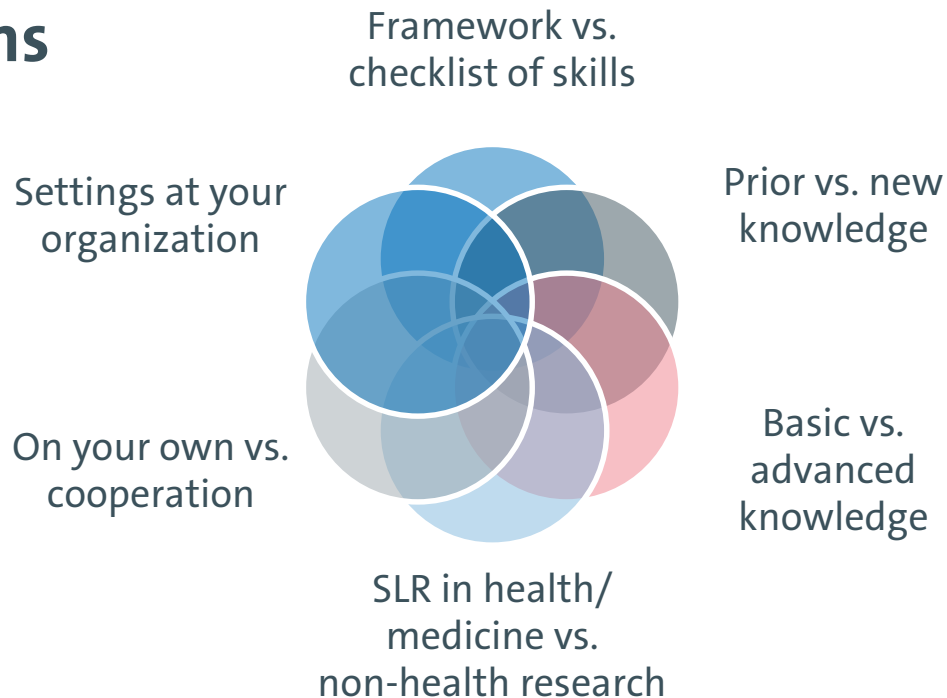
Error #14: Failure to use appropriate search methods

Error #15: Free-text and structural errors

Error #16: Dubious criteria for search strategy development

4 Preparing and educating ourselves: Dimensions

4.1 Dimensions



4.2 Framework vs. Checklist

| Competency | Scope Note |
|--------------------------------------|--|
| SR foundations | How and why SRs are used in the health sciences and how to effectively find SRs |
| Process management and communication | Resources and skills involved in SR team communication and effective project management |
| Research methodology | Ability to comply with & advise teams on SR standards & best practices |
| Comprehensive searching | Ability to construct and document replicable search strategies in appropriate literature databases and other information resources |
| Data management | Processes, tools, and skills involved in using data and ensuring data integrity, archiving, and tracking for the SR process |
| Reporting | Ability to communicate literature search methods and results according to established standards so that they are suitable for publication and are replicable |

4.2 Framework: Research methodology

Competency

Ability to comply with and advise teams on SR standards and best practices

Scope Note

- Matching of research question to an appropriate review type
- Core SR methodology and reporting standards, guides, and handbooks
- Protocol development, including question refinement, inclusion/exclusion criteria, data management plan, and protocol registration
- Searching (see “Comprehensive searching” competency)
- Data management (see “Data management” competency)
- Critical appraisal of SR quality
- Study selection processes, including inter-rater reliability, risk of bias, and critical appraisal

4.2 Framework: Comprehensive searching

Competency

Ability to construct and document replicable search strategies in appropriate literature databases and other information resources

Scope Note

- Conduct of preliminary searches to confirm the need for an SR
- Database selection appropriate to the research question, including grey literature resources
- Techniques and strategies for keyword and controlled vocabulary search term generation
- Search filters, including validation and sources
- Creation of comprehensive search strategies in multiple databases using advanced search techniques
- Search strategy validation techniques, including use of sentinel articles
- Techniques and tools to save searches, set auto-alerts, and update searches
- Transparent and complete documentation procedures for replicable searches

4.3 Prior vs. new knowledge

- Prior knowledge
 - Databases, repositories in the subject area
 - Search interfaces, searches in the databases
 - Techniques and strategies for keyword and controlled vocabulary search term generation
 - Literature search interview at the reference desk for traditional literature search
- New knowledge
 - Quality of content and vocabularies
 - Transfer search strategy from database to database

4.4 Basic vs. advanced

- Basic
 - Protocols and standards (Cochrane, Campbell Collaboration)
 - PRISMA, PRISMA-S
 - Question Frameworks (PICO)
 - PRESS
- Advanced
 - In-depth knowledge of content quality of databases (resources, descriptors)
 - In-depth knowledge of tools beyond searching
 - Search summary table (Bethel, 2021)
 - New developments (AI, research data management, search history depository)

4.5 SLR in health/medicine vs. non-health research areas

- Each subject has its own challenges (types of studies, search strategies with regards to controlled vocabulary, database licenses)
- SLR as research method > guides from the subject area
- Subject-specific protocols and standards

4.6 On your own vs. cooperation (1)

- Self-paced
 - online training, libguides
 - sitting in on consultations
 - degree program
- Practical experience
 - Search club
 - Peer review of search strategies
 - Meetings to discuss journal articles of interest, lessons learned
 - Co-Authorship
 - Mentor/Mentee

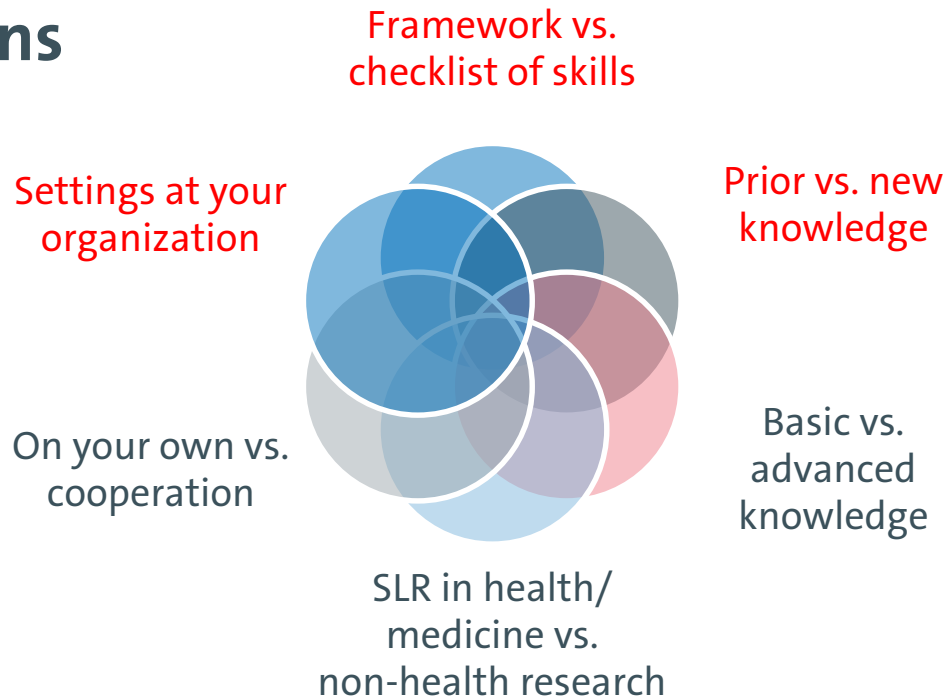
4.6 On your own vs. cooperation (2)

- Knowledge exchange
 - Working groups
 - in the library / campus-wide / interdisciplinary or subject-specific / national / international
 - SLR special interest group with professional associations
 - Conferences, weblogs, twitter

4.7 Settings at your organization

- Number of SLR requests per year
- Who is getting support? (students or faculty)
- Service model:
 - Self help,
 - Support & training,
 - Search proof reading service, Mediated literature searching, Expert consultant service
- Involvement: educator – advisory consultant – co-author?
- Database licenses
- Support by library management

4.8 Dimensions





5 Preparing and educating ourselves: Your skill development plan (SLR for Business Studies)

5.1 Skill development for SLR in business studies

| Basic | Advanced | Expert |
|--|---|---|
| <ul style="list-style-type: none">▪ Reflecting prior knowledge▪ General introduction▪ Subject-specific introduction▪ SLR as Research Method as seen by the subject area | <ul style="list-style-type: none">▪ Guides for librarians by librarians▪ Handouts and guides: Databases and repositories▪ Practice▪ Stay up-to-day | <ul style="list-style-type: none">▪ Advance the method▪ In-depth practice▪ Exchange and collaboration |

5.2 Basic 1: Reflecting prior knowledge

- Prior knowledge
 - Databases, repositories in the subject area
 - Search interfaces, searches in the databases, tutorials for the databases
 - Techniques and strategies for keyword and controlled vocabulary search term generation (concept boxes)
 - Literature search interview at the information desk

5.2 Basic 2: General introductions

- Cochrane / health
 - [Training program and online learning](#)
 - [Learning modules](#)
- Campbell Collaboration / Systematic reviews in the social sciences
 - [What is a systematic review?](#)
 - [Training and courses](#)
 - [Systematic Reviews and Meta-Analysis — Open & Free](#)
 - Youtube channel: <https://www.youtube.com/@collaborationtube>
 - [Campbell Methods Webinar series](#)
- [PRISMA](#), [PRISMA-S](#) (Extension for searching)

5.2 Basic 3: Introduction in SLR in non-health research area

- Evidence Synthesis Institute
 - [Book](#)
 - [Libguide: Systematic reviews and evidence synthesis beyond the health sciences: a training for librarians \(2020\)](#)
- Campbell Collaboration
 - [Evidence synthesis information retrieval in business and commonalities across disciplines](#)
 - 2017: [Business and Management coordinating group](#)
- List with good SLRs from the subject area

5.2 Basic 4: SLR as Research Method as seen by the subject

- Research culture for the discipline – know specifics of research approaches

| Article | Subject Area | Notes |
|----------------------------|---------------------------------------|---|
| Adams, Smart, & Huff, 2017 | Management and organizational studies | International Journal of Management Reviews • Grey Literature |
| Clark et al., 2021 | Management and business | Management Review Quarterly |
| Fisch & Block, 2018 | Management and business | Management Review Quarterly |
| Palmatier et al., 2018 | Marketing | Journal of the Academy of Marketing Science |
| Torraco, 2005 | Human resources | Human Resource Development Review • Defines the integrative literature review • Provides guidelines and examples for integrative literature reviews |
| Tranfield et al., 2003 | Management | British Journal of Management • Compares management and healthcare research • Highlights the challenges of conducting a SR in management research • Provides guidelines for conducting a SR in management research |

(Snyder, 2019)

5.3 Advanced 1: Guides for librarians by librarians

- Carrie Price: [Systematic Reviews for Librarians](#)
- Whitney Townsend: [Systematic Reviews for Search Professionals](#)
- Macquarie University: [Non-Health Systematic Reviews](#)
- University of Calgary / Libraries Cultural Resources: [Systematic reviews and meta-analysis in business/management](#)
- Birmingham City University / Library and Learning Services: [Systematic reviews for business and management](#)
- Westchester Univ. / University Libraries: [Literature review in public administration](#)
- Radboud Univ. / Univ. Library: [Business admin. & economics: systematic review](#)
- DBWM: [Systematic Literature Review](#)

5.3 Advanced 2: Handouts for Databases

- List of databases and repositories
- How to evaluate quality of content of databases and repositories
 - Business Source, ABI/Inform, Econbiz, Web of Science
- Create search strings and adapt to the database (block building approach, descriptors)
- Checklist for transferring search strategies between databases

5.3 Advanced 3: Practice

- Working groups in the library / campus-wide / interdisciplinary or subject-specific
 - Sitting in on consultations
 - Peer review of search strategies
 - Search clubs
 - Meetings to discuss journal articles of interest, lessons learned (i.e. [BusLibsinSR](#) (Zarah Premji))
- Apply research results for your own searches:
 - <https://whatreviewisrightforyou.knowledgetranslation.net/>
 - <https://systematicreviewlution.com/>

5.3 Advanced 4: Stay up-to-date

- Search for Articles about SRL in PubMed, SSCI > methods
- Follow persons / organizations on Twitter
 - [#SystematicReview](#)
 - Alice Cann / <https://twitter.com/alicecann>
 - Carrie Price / <https://twitter.com/carrieprice78>
 - Wichor Bramer / <https://twitter.com/wichor>
 - Lesley Uttley / <https://twitter.com/LesleyUttley>

5.4 Expert 1: Practice and research

- Advance the method
 - Search summary table (Bethel, 2021)
 - Search history repositories
 - New developments (AI, research data management)
- In-depth practice
 - Write your own SLR
 - Co-authorship
 - Mentor/mentee

5.4 Expert 2: Exchange and collaboration

- Working groups
 - SLR special interest group with professional associations
 - BLA BSLR Working Group
- Community of practice
 - Sharing resources
 - Organizing hands-on training
 - Peer-reviewing search strategies
 - Evaluating protocols for fitting the needs of business studies

5.5 Skill development for SLR in business studies

| Basic | Advanced | Expert |
|---|--|---|
| <ul style="list-style-type: none"> ▪ Reflecting prior knowledge ▪ General introduction ▪ Subject-specific introduction ▪ SLR as Research Method as seen by the subject area | <ul style="list-style-type: none"> ▪ Guides for librarians by librarians ▪ Handouts and guides: Databases and repositories ▪ Practice ▪ Stay up-to-day | <ul style="list-style-type: none"> ▪ Advance the method ▪ In-depth practice ▪ Exchange and collaboration |

+ Settings of the organization
 + Bloom's taxonomy



= training plan for an individual skill profile

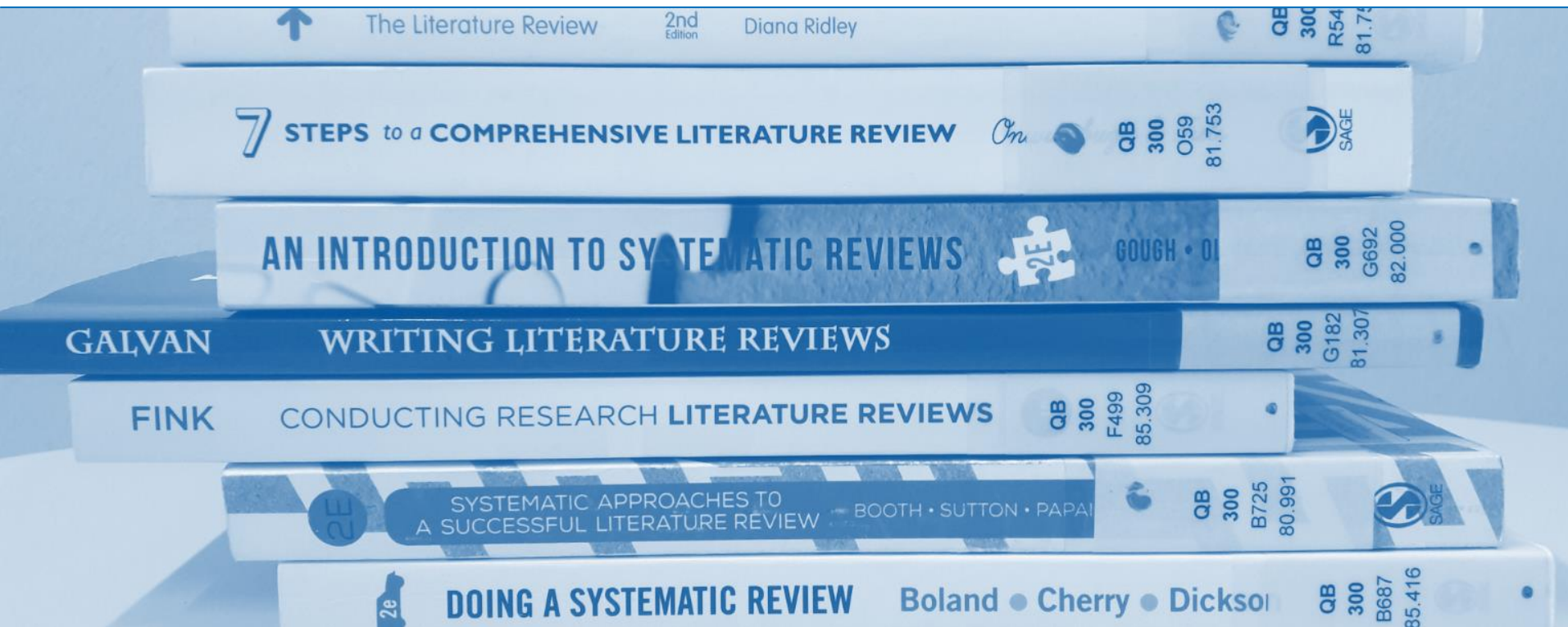
6 Conclusion & Discussion

6.1 Conclusion

- Bumpy road **or** smooth ride?
 - > **From** a bumpy road **to** a smooth glide
 - Perfectionism
 - Steep learning curve
 - Disappointment (not every SLR stays a SLR)
 - Standards + protocols
 - Lots of materials

6.2 Discussion

- How does the number of requests for SLR support impact the time for educating yourself?
- How can we document the information for one subject area so that it is accessible for everyone?
- What can we use from SLR in health/medicine?



Bibliography

Liu, G. (2021). Systematic reviews in business and management: are business librarians ready? *Academic BRASS*, 16(1), 1-8.

https://digitalcommons.wcupa.edu/lib_facpub/23

Snyder, H. (2019). Literature review as a research methodology: an overview and guidelines. *Journal of Business Research*, 104(C), 333-339.

<https://doi.org/10.1016/j.jbusres.2019.07.039>

Townsend, W. A., Anderson, P. F., Ginier, E. C., MacEachern, M. P., Saylor, K. M., Shipman, B. L., Smith, J. E. (2017). A competency framework for librarians involved in systematic reviews. *Journal of the Medical Library Association*, 105(3), 268–275. <https://doi.org/10.5195/jmla.2017.189>

Tranfield, D., Denyer, D., & Smart, P. (2003). Towards a methodology for developing evidence-informed management knowledge by means of systematic review. *British Journal of Management*, 14, 207–222. <https://doi.org/10.1111/1467-8551.00375>.

Dr. phil. Sabine Rauchmann, M.Sc.
Fachreferat der Fachbibliothek Wirtschaftswissenschaften

Universität Hamburg
Fakultät Wirtschafts- und Sozialwissenschaften
Bibliothek der Fakultäten WISO und BWL
Lz: II/21

Von-Melle-Park 5
Raum 1021 (Aufgang D), Postfach #31
D-20146 Hamburg

Telefon: +49 40 42838-5605
E-Mail: sabine.rauchmann@uni-hamburg.de
Webseite: www.wiso.uni-hamburg.de/bibliothek/
ORCID: orcid.org/0000-0002-7540-6924